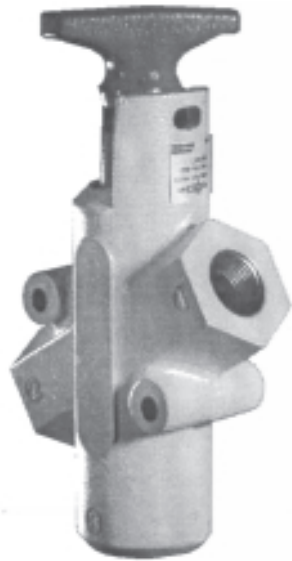


Lockout Valves



Features

- Used in systems for compliance with OSHA Standard 29 CFR Part 1910.
- G1/4 to G1 port size.
- Cv's from 3.0 to 10.0.
- High flow G1 exhaust port all sizes.
- Rugged cast aluminium alloy body.
- Metal handle more durable than competitive plastic handles.
- Inline or surface mounting.
- Mounting holes interchangeable with 3/8" - 1/2" ISI models.
- Safety yellow and red for high visibility.
- Denteted spool
- Optional silencer installed.

Application

Lockout valves are installed in pneumatic drop legs, or individual pneumatic control lines (see figure 1.) In accordance with OSHA procedures, lockout valves are used during maintenance and service procedures of pneumatically (air) operated equipment. Prior to servicing, the red handle is pressed inward, blocking pressure and relieving all downstream air pressure. A padlock is installed through the locking hasp, preventing accidental actuation during the maintenance procedure. Following maintenance, the padlock is removed and the red handle is pulled outward, returning air pressure to the system. (For complete lockout/tagout procedures, consult OSHA standard 29 CFR part 1910 in U.S. Federal Register /Vol. 54 no. 169, Friday, September 1, 1989/Page 36644).

Valves can be inline mounted or surface mounted using the two 8mm mounting holes provided in the valve body. Mount valves in plain view with the handle oriented for accessibility.

Mounting

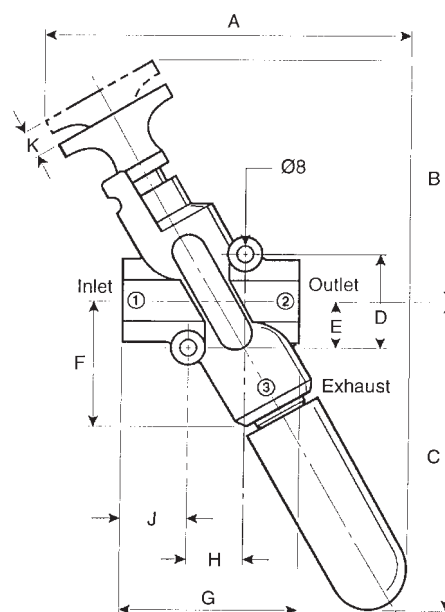
Valves can be inline mounted or surface mounted using the two 8mm mounting holes provided in the valve body. Mount valves in plain view with the handle oriented for accessibility.

Operation

Normal Machine Operation - With the handle pulled outward. Inlet port 1 is open to outlet port 2. Exhaust port 3 is blocked.

Lockout Operation - With the handle pushed inward. Inlet port 1 is blocked. Outlet port 2 is open to exhaust port 3.

Dimensions (mm)



	A	B	C	D	E	F	G	H	J	K
mm	212	143	169	56	28	75	105	34	39	18

Technical Information

Pressure range : 0 to 17 bar
 Temperature range (ambient) : 0° to 70°C

Flow Coefficiency (C_v)

Model	1 - 2	2 - 3
LV20BA	3.0	6.0
LV30BA	4.3	9.0
LV40BA	7.7	11.3
LV60BA	9.5	9.0
LV80BA	10.2	8.8

Materials of Construction

Body & Handle : Cast Aluminium Alloy
 Spool : Aluminium
 Seals : Carboxylated Nitrile
 Dentet Spring : Stainless Steel
 Grease : Magnalube G

Part Nos.

Description	Port Size (G1 exhaust)				
	G1/4	G3/8	G1/2	G3/4	G1
Standard 3/2 Lockout	LV20BA	LV30BA	LV40BA	LV60BA	LV80BA

Lightweight porous polythene silencer for G1 exhaust port : Part No. **500-6**

Sample Lockout Circuit

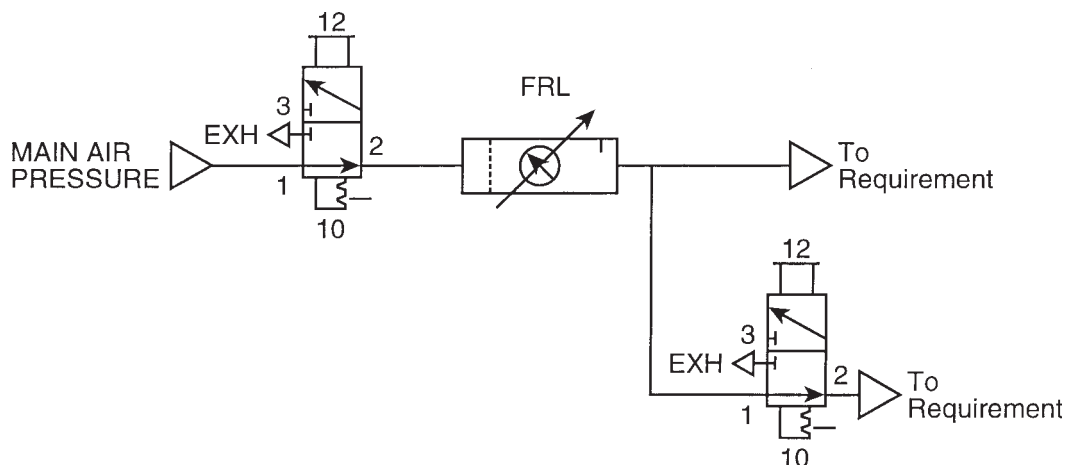


Fig 1.
Lockout Valves shown in the normally open condition